A collection of military medals and a compass on a wooden surface. The medals include a red ribbon with a circular emblem, a white star with a central emblem, and a blue ribbon with a circular emblem. A pair of glasses is also visible. The compass is in the bottom left corner.

# 葛森療法 香港支援站

The Gerson Therapy

## 牙科指引

主講：*Brenda Soong* 宋聲怡

*Certified Gerson Home Set-up Trainer*

葛森認證家居培訓師

提供非醫療葛森家居設置及培訓

[info@gersonhksupport.com](mailto:info@gersonhksupport.com)

[www.gersonhksupport.com](http://www.gersonhksupport.com)



# 一般牙科指引

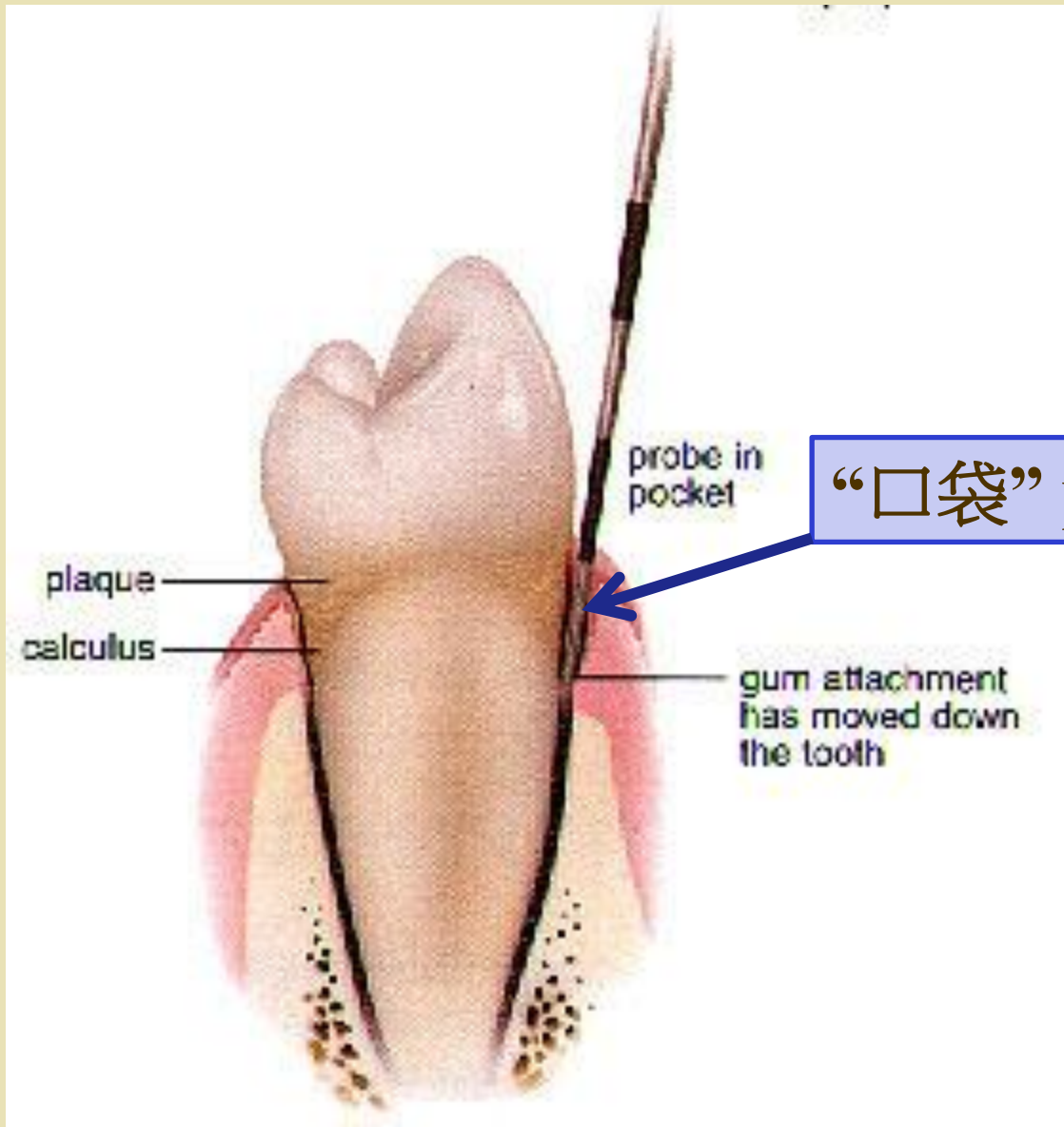
- ◆ 牙齒，牙齦和牙周組織的狀況對人的健康有很大的影響
- ◆ 這些組織受損害可以削弱免疫系統
- ◆ 建議最好尋求屬於IAOMT成員的生物牙醫(Biological dentists)的幫助
- ◆ [www.iaomt.org](http://www.iaomt.org)





# 牙齦疾病和牙周疾病

- ◆ 與許多健康風險有關連
- ◆ 細菌在“口袋”(pockets) 裡可以進入血液造成系統性風險增加：
  - 心內膜炎和高血壓
  - 低出生體重嬰兒，骨質疏鬆症，糖尿病和老年癡呆症





# 銀汞合金補牙

## Silver Mercury Amalgam Fillings

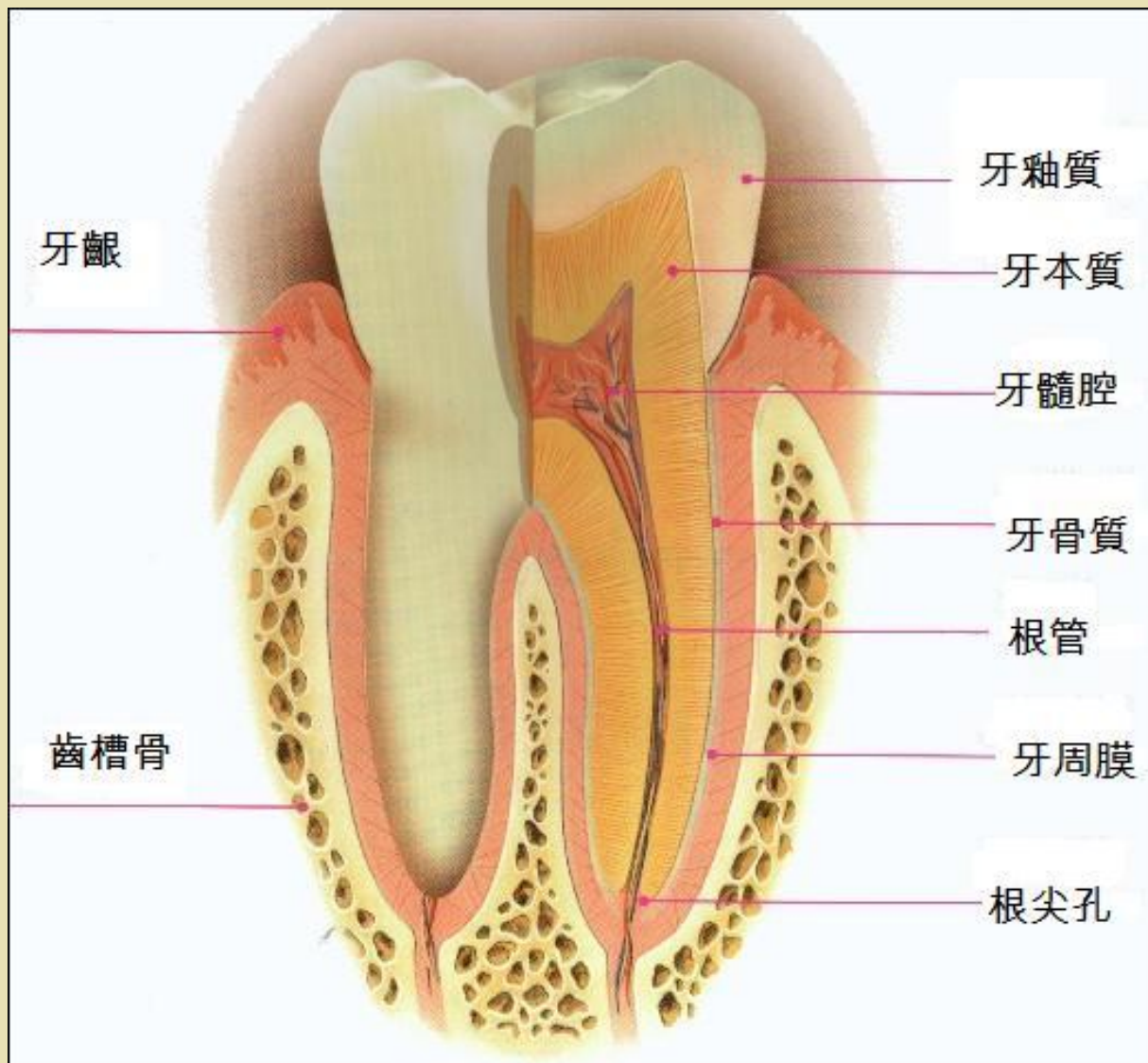
- ◆ 毒性很大
- ◆ 損害免疫系統
- ◆ 葛森患者應該等待6-9個月才去除銀汞合金
- ◆ 病人必須排毒和免疫力較強時進行



# 牙齒根管 Root Canal

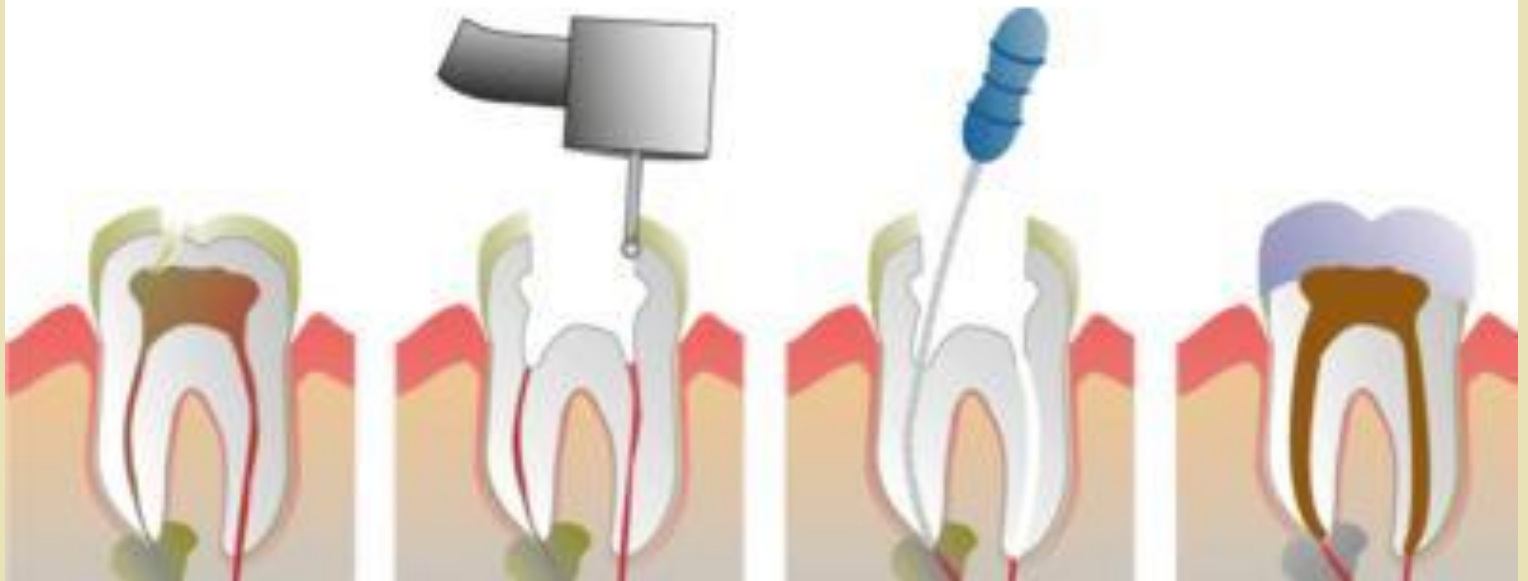
- ◆ 不推薦
- ◆ 細菌駐留在牙小管和擴散到身體的其他部位，並導致免疫抑制
- ◆ 細菌分泌的毒素可能是癌症形成的一個因素
- ◆ 如果情況許可，牙齒根管應盡快取出







## 根管治疗的过程示意图









# 牙齒根管 Root Canal

Dr. Josef Issles, MD

- ◆ 德國著名醫生，治療超過1000個的癌症患者
- ◆ 世界著名綜合癌症治療的先鋒
- ◆ 說40年來治療癌症患者，其中97%有根管充填的牙齒
- ◆ <http://www.issels.com>
  - 點擊 publications,
  - 點擊Cancer: A Second Opinion- Chapter-8-Focus on Foci



# 牙齒根管 Root Canal

- ◆ 如病人虛弱，拔牙可能需要延遲，直至身體好些
- ◆ 參考書：
  - The Root Canal Cover Up by George E.Meinig, DDS



# 牙科麻醉

- ◆ 葛森病人經徹底排毒後，對疼痛具有較高的容忍度和藥物較高敏感度
- ◆ 建議牙醫：
  - 不加入腎上腺素麻醉
  - 使用平均劑量的三分之一
  - 盡快開始

# 口腔衛生

- ◆ 不要使用含蘇打或含氟牙膏
- ◆ 只需要很小量牙膏
- ◆ 飯後用牙線
- ◆ 胡蘿蔔汁後用水漱口

自然+藥物  
全天然全  
天然+化學品  
全化學品



DID YOU KNOW SQUARES ON  
TUBES MEAN SOMETHING



GREEN: ALL NATURAL  
RED: SOME NATURAL, BUT MOST CHEMICALS  
BLACK: ONLY CHEMICAL ARE USED





CAVITY FIGHTING TOOTHPASTE

# Fluoride



NET WT 6.4 OZ (181g)

CAVITY PROTECTION & EXTRA BREATH FRESHENING

Regular Flavor

## Drug Facts

ACTIVE INGREDIENT	PURPOSE
Sodium Monofluorophosphate - 0.76% (Total Fluoride Content - 1000 ppm Approx.)	Anticavity

**USE** Regular brushing with Fluoride toothpaste helps protect teeth and roots against cavities.

**WARNING**  
Keep out of the reach of children under 6 years of age. In case of accidental overdose, seek professional assistance or contact a Poison Control Center immediately.

## Drug Facts (continued)

### DIRECTIONS

Adults and children 2 yrs. and older Brush teeth thoroughly after meals or at least twice a day or use as directed by a dentist or physician.

Children under 6 yrs To minimize swallowing use a pea-sized amount and supervise brushing until good habits are established.

Children under 2 yrs Ask a dentist or physician.

### INGREDIENTS

Calcium Carbonate, Water, Sorbitol, Precipitated Silica, Sodium Lauryl Sulphate, Flavor, Sodium Carboxy, Methyl Cellulose, Sodium Silicate, Tetra Sodium Pyrophosphate, Sodium Saccharin, Methyl Paraben, Titanium Dioxide, Poly Ethylene Glycol 400, Propyl Paraben, Color: F D & C Blue # 1.

Distributed by:  
UNITED EXCHANGE CORP.  
LA MIRADA, CA 90638 USA

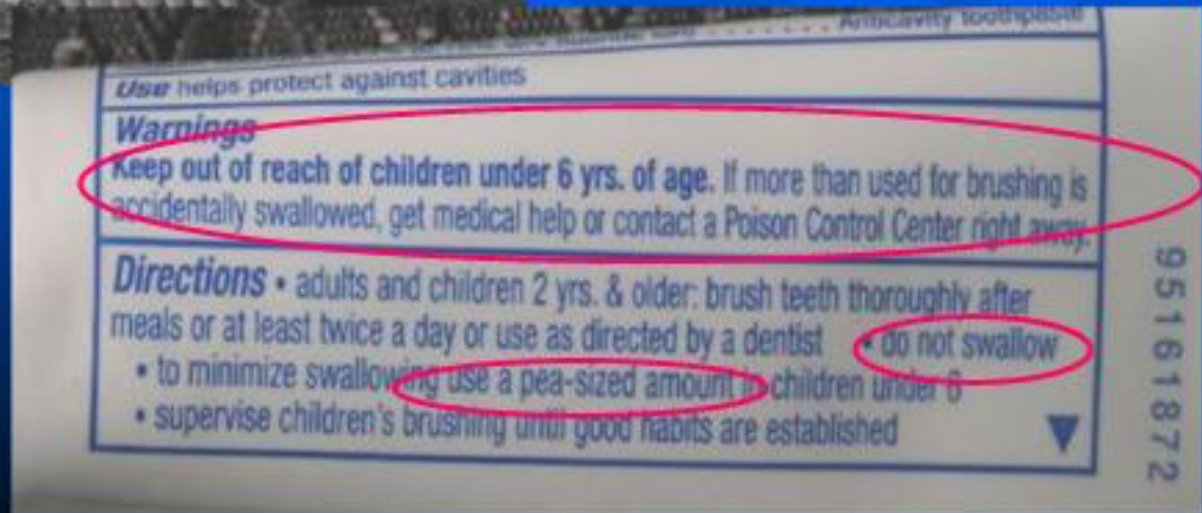
Made in India

C.No. DNHCOS/DNH/52

Exp. Date & Batch No. on crimp.



A Pea Size of Tooth  
Paste has 0.5 mg of F-  
The same as 1-2 glasses  
of Fluoridated water.







牙科指引